



girl scouts
north carolina
coastal pines



11
12

ANNUAL
REPORT



Since 1912, Girl Scouts has cared about supporting girls’ health, wellness and leadership development. We have stayed true to the Girl Scout Promise and Girl Scout Law and have remained passionate about building girls of courage, confidence, and character, who make the world a better place.

Our 100th anniversary campaign, *At the Speed of a Girl*, helped celebrate and honor the development of countless girls and women who are leading in our communities, our country, and around the globe. As we begin our next 100 years, our commitment to girls remains the same – to offer every girl experiences and opportunities to help her excel, exceed and lead.

Girl Scouts – North Carolina Coastal Pines

Girl Scouts is the preeminent leadership development organization for girls with 3.2 million girl and adult members worldwide. As one of 112 Girl Scout councils chartered by Girl Scouts of the USA, Girl Scouts – North Carolina Coastal Pines serves more than 35,000 girl members and more than 10,000 adult members in 41 central and eastern North Carolina counties.

With administrative headquarters in Raleigh, regional service centers in Fayetteville and Goldsboro, four camp properties, and countless community partners, our capacity to serve girls and provide relevant and engaging programming continues to grow.



Our Counties

- Beaufort
- Bladen
- Brunswick
- Carteret
- Chatham
- Columbus
- Craven
- Cumberland
- Duplin
- Durham
- Edgecombe
- Franklin
- Granville
- Greene
- Halifax
- Harnett
- Hoke
- Johnston
- Jones
- Lee
- Lenoir
- Martin
- Moore
- Nash
- New Hanover
- Northampton
- Onslow
- Orange
- Pamlico
- Pender
- Person
- Pitt
- Richmond
- Robeson
- Sampson
- Scotland
- Vance
- Wake
- Warren
- Wayne
- Wilson



Our Commitment to Girls: The Next 100 Years

Dear Friends,

For over a century, Girl Scouts has been making a meaningful impact on our girls and continues to be the largest girl-serving organization committed to building girls of courage, confidence and character, who make the world a better place.

Our centennial anniversary provided the unique opportunity to honor our organization through a variety of events, exhibits, and activities. Over 95 celebrations were held council-wide including our Centennial Jubilee event at Carolina Horse Park in Hoke County where nearly 2,100 girls and adults enjoyed a weekend of fun and engaging activities.

In addition, our 100th Anniversary Gala event was a great success helping raise over \$116,000 to further our mission. From continued partnerships with companies like IBM and Cisco Systems, Inc. and with continued support from funders like the United Way and Wells Fargo, we are able to help shape and inspire girls to become successful and life-long leaders.

With this support, we can further our mission by increasing the opportunities and leadership benefits we provide in Girl Scouting and beyond. Our expanding STEM programs, the new *BFF: be a friend first* series aimed to prevent bullying, and the *It's Your Story – Tell It!* Journey which helps girls develop a strong sense of self, are just three small parts of the Girl Scout Leadership Experience.

Today, only one in five girls believes she has the key qualities to lead. Yet, most believe that women have what it takes to be leaders in today's world. Girl Scouts is committed to helping girls break through leadership barriers to create a more balanced and richly diverse generation of future leaders.

As we begin our next 100 years, we invite you join Girl Scouts – North Carolina Coastal Pines in helping each girl reach a successful future. When girls succeed, so does society.

Lisa M.K. Jones
Chief Executive Officer

Bernadette Spong
Board of Directors, Chair

Looking Back, Moving Forward

To the Girl Scouts – North Carolina Coastal Pines family:

During the past five years, I have been able to fulfill one of my dreams and lead an organization about which I am truly passionate. Transitioning into retirement and reflecting on these last five years, I know that I have left my mark on Girl Scouting and that Girl Scouting has made me a better person.

Over the course of my tenure, many new and exciting things have occurred, such as the introduction of the Leadership Journeys and our 100th Anniversary. My first priority has always been the girls. They are why Girl Scouting exists and the reason behind our efforts.

My goal was to strengthen the organization to allow our Girl Scouts to explore opportunities and experiences they might not otherwise have had and to provide those opportunities in a safe, encouraging and fun environment. My second priority has always been our volunteers. Without them, simply, the execution of our Girl Scout Leadership Experience would not be possible.

I am especially proud of the expansion of our STEM (Science, Technology, Engineering and Math) programming for our Girl Scouts because these are the fields of the future and our girls need to be able to compete in these areas. I am pleased to announce the first all-girl team in the North Carolina FIRST Robotics Competition comes from Girl Scouts – North Carolina Coastal Pines.

Through the hard work and vision of our leadership team and their departments, we continue to grow membership and retention, improve member and volunteer satisfaction, and increase our funding and resources. Our council is as strongly positioned for the future as it has ever been and I feel confident in its stability and sustainability for years to come. Thank you.

Rusine Mitchell Sinclair
Chief Executive Officer, 2007-2013



Guiding the Path, Discovering the Fun

Girl Scouting is not just about what the girls do, it is also about how they do it. The Girl Scout Leadership Experience focuses on girl-led experiences, “learning by doing,” and cooperative learning. These three processes help the girls take ownership of their activities, increasing self-esteem and empowering them for the future.

During 2011-2012, our council served **35,826 girls** in troops and groups throughout our council region. Reflecting the rich diversity of our communities, 50% of girl members identified as racially or ethnically diverse. With the support of **10,440 adults**, girls were able to explore and engage in the Girl Scout Leadership Experience.

Girl programming focuses on topics that enhance the Girl Scout Leadership Experience including Journeys, financial literacy, STEM (Science, Technology, Engineering and Math), healthy living, self-esteem, and environmental stewardship and citizenship.

It is of great priority that the Girl Scout program and community is accessible for all girls. By removing barriers through community outreach and providing financial assistance to meet girls’ needs, we brought the benefits of Girl Scouting to 15,030 girls, over 40% of our membership who could not otherwise participate.

Girls were served in after-school programs, at public housing facilities, and through partnerships with other youth-serving agencies, including local **Boys & Girls Clubs**, community centers, and alternative schools.

With the support of **Golden Corral Corporation**, *four new Girl Scout troops* in public housing communities in Garner, Wendell, and Zebulon are now able to participate in Girl Scouting.



Encompassing Community Excellence



The Girl Scout Gold Award represents the highest and most prestigious achievement in Girl Scouting and provides the opportunity for girls to take action and create a lasting change in their communities. Each year, girls Go Gold by demonstrating extraordinary leadership through remarkable **Take Action** projects that have sustainable impact in their communities and beyond.

Over 200 people gathered for the **100th Anniversary Girl Scout Gold Award Celebration** held in April 2012 at Raleigh's McKimmon Center honoring Girl Scout Seniors and Ambassadors who earned Girl Scouts' most prestigious award. In addition to current recipients, this event celebrated all Girl Scouts who earned her Girl Scout Gold Award, Golden Eaglet, First Class, and Curved Bar award during the organization's 100 years.

During 2011–2012, 38 Girl Scout Seniors and Ambassadors earned the **Girl Scout Gold Award**, 153 Girl Scout Cadettes earned the **Girl Scout Silver Award**, and 793 Girl Scout Juniors earned the **Girl Scout Bronze Award**.

Awarded to fewer than six percent of Girl Scouts annually, each Gold Awardee spends one to two years on her project. Congratulations to all of Girl Scouts – North Carolina Coastal Pines' Girl Scout award recipients for achieving their goals and this distinguished honor all while serving our communities.



2011–2012 Girl Scout Gold Award Recipients

Kaitlyn Grace Adams
Ann Marie Balance
Jasmine Alyssa Bogan
Carly Marie Collette
Elizabeth Ann Cooper
Allison Rose Criscenzo
Emily Macourt Jenkins Fennell
Elizabeth Ann Feola
Amanda Carrie Fisher
Christine Marie Fry
Arlee Rose Hiskey
Hannah Marie Hunt
Megan Izzo

Kjersti Corrine Kleine
Morgan Michaela Leigh Long
Prenessa Danielle Lowery
Natalie Michelle Malpass
Lorna Sofia Martinez-Guzman
Mary Bowman McCarthy
Ashleigh Elizabeth Miles
Holly Anne Moody
Casey E. Moore
Jordyn A. Pennington
Nicolette Mikayla Pennisi
Casey Elizabeth Potter
Collier Ann Savage

Elisabeth Jane Schricker
Brittany Lynn Schulz
Bridget Kathleen Seelinger
Caitlin Mateer Seyfried
Nikita Srivastava
Ada Virginia Taylor
Kimberly Sumner Thornton
Tiana Threatt
Morgan Elizabeth Trachtman
Anita Jordan Tyndall
Sneha Venkatraman
Dayna Carol Wells

**WHEN GIRLS LEAD IN
THEIR OWN LIVES,
THEY DISCOVER
THEIR VALUES AND
THE CONFIDENCE TO
DO WHAT'S RIGHT.**



Thinking Outside the Box

It's more than what comes in a box. Everything girls do in Girl Scouting is designed to help them grow into women of courage, confidence and character. The Girl Scout Cookie Program is the nation's premier financial literacy program for girls.

The 5 Skills that girls learn through the Girl Scout Cookie Program – goal

setting, decision making, money management, people skills and business ethics – are important ingredients in the Girl Scout Leadership Experience.

Super Sellers

Congratulations to the council's 2012 Top Seller!

Saorla O'Toole – 3,225 boxes
Onslow County/Camp Lejeune

Charisma Parham – 2,685 boxes
Brunswick County

Tiana Hargrove – 2,638 boxes
Vance/Warren County

All proceeds from cookie sales remain in our council and are used to benefit girls – both directly in troop treasuries and indirectly by subsidizing the cost of providing Girl Scouting throughout our 41 counties.

For the eighth year, Girl Scouts – North Carolina Coastal Pines' Cookie Program supported military troops with cookies through its **Operation Cookie Drop** campaign. To date, customer donations have purchased more than 512,000 boxes of cookies for men and women in uniform serving overseas.

Thanks to a partnership with **Sage Mobile Payments**, customers were able to purchase cookies by credit card at many booth locations during the 2012 Cookie Program sale.

Nothing Square About It

Studies show that girls are more successful in cooperative, hands-on math and science programs, and greatly benefit from all-girl science experiences. By exposing girls to STEM and connecting them with female role models, Girl Scouts – North Carolina Coastal Pines is helping to inspire and motivate the next generation of STEM professionals.

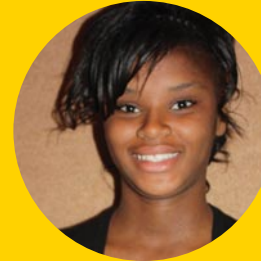
Partnering with women professionals from local companies like **IBM**, **Cisco Systems**, **Time Warner Cable**, **GlaxoSmithKline**, and **RTI International**, the 7th annual TechnoQuest event brought teen girls onto the campus of Meredith College. 120 girls explored circuits, computer-aided interior design, forensics, sound transmission, robotics, computer programming, chromatography, and chemistry.

The UNC—Wilmington Center for Marine Science hosted **MarineQuest** where 141 girls and 53 adults explored the marine habitats of coastal Wilmington. Girls and adults participated in four events with a variety of activities, hands-on learning and marine adventures. Girls even had the opportunity to collect salt water samples from coastal fishing areas and examine the samples in a real-life lab.

Through grants from both the **Burroughs Wellcome Fund** and **Cisco Systems**, we were able to host 71 Girl Scout Cadettes for a unique **Summer Science Camp** on the Meredith College campus. Girls got a taste of college campus life by staying in resident halls, eating in the dining hall, and going to STEM-based classes.

Girl Scout robotics teams placed in awards competitions against nearly 70 teams in the **FIRST® LEGO® League State Championships** held on January 21 at North Carolina A&T University in Greensboro. The Polka Bots team from Pitt County won the second place award for Core Values and Teamwork.

The Eggsperts team from Wake County was invited to participate in the **FIRST® LEGO® League North American Open Tournament of Champions**. In May, the team of seven girls and two coaches traveled to California to compete on the national level against 64 teams – of which only two were all-Girl Scout teams. They won the Most Innovative Solution award.



Girl-led, Girl-driven

The focus on girls is essential. Independent Girl Scout research has shown that today's girls tend to shy away from leadership opportunities. Even those with a desire to lead often feel they do not have what it takes and yet statistics indicate convincingly that without balanced future leadership in place – a leadership that values the unique viewpoints and abilities each gender brings to the table – our society as a whole cannot succeed.



Through a continued partnership with the **United Way of the Greater Triangle's Women's Leadership Council**, our Council hosted the *Discover the Leader in You! Leadership Camp* in August at Camp Mary Atkinson. During the week-long camp, 40 middle school girls explored their personal values, leadership styles, conflict resolution styles, communication, and leadership in action. In addition to experiencing a range of outdoor activities, girls had the opportunity to visit the **Bayer Crop Science facility** and hear from students and staff from **Meredith College**.

The **National Inclusion Project** has partnered with Girl Scouts – North Carolina Coastal Pines to implement *Let's ALL Play—Inclusion in Recreational Programs* to allow young people with disabilities to enjoy a successful Girl Scout experience in an inclusive setting. The goal is to open doors in communities nationwide for children with disabilities to experience everything life has to offer—including arts and crafts, community service, physical fitness, and more.

Girl Scouting is intent on changing the way girls look at themselves and the way the world looks at girls. The *uniquely ME!* program addresses the nationwide problem of low self-esteem among adolescent and pre-adolescent girls. By helping girls build self-esteem and self-confidence, the *uniquely ME!* program helps girls realize their full potential. Support from the **Carolina Hurricanes Kids 'n Community Foundation** allows outreach efforts such as the *uniquely ME!* program to grow and thrive.



**WHEN GIRLS LEAD IN THEIR COMMUNITIES,
THEY CONNECT AS THEY LEARN HOW TO
WORK WITH OTHER PEOPLE.**

Shaping Our Community

Girls are joining forces to change the world. Girl Scouts are leading the way in improving the quality of life in their local and global communities through citizenship, stewardship and the power of advocacy.

Furthermore, Girl Scout—North Carolina Coastal Pines offers specific programming where girls can explore more about advocacy and the power of a voice.

In conjunction with our sister councils statewide, Girl Scouts—North Carolina Coastal Pines hosted 12 high school girls at the **North Carolina Governor's Page Program** during Girl Scout Week in March. Girls met with the governor, worked with Cabinet members, and toured important sites as part of their weeklong experience.

The 5th annual **UNC Women in Law** event at UNC—Chapel Hill in October allowed girls and adult volunteers to participate in mock trials, enhance their public speaking skills, and explore self-confidence.

Girl Scout Cadettes, Seniors and Ambassadors worked on developing a trial for a Title IX case in addition to learning about the law school experience for female students.

Our partnership with the **North Carolina Bar Association** and its *Women's Professional Committee* has generated biographies of five North Carolina women who were Girl Scouts before joining the legal profession - two judges and three practicing attorneys from Asheville, Charlotte and the Triangle area.

Coming Full Circle

Encouraging healthy lifestyles is part of the fabric of our program opportunities and Girl Scouts—North Carolina Coastal Pines works to create innovative and engaging programs, events and camp sessions that get girls—and adults—up and moving. Camping, hiking, swimming and all things outdoors shows girls of all ages that leading an active lifestyle will create lasting benefits to overall physical, mental and emotional health.



The 2012 **"Celebrate"** summer season served **2,285 campers** (representing 38 of our 41 counties) at a session of resident camp or adventure trips.

Campers celebrated the past 100 years by enjoying traditional camp activities such as crafts, swimming, archery, and

canoeing, as well as specialty sessions like horseback riding, surfing, and sailing.

In July, IBM employees participated in day of service and fun at **Camp Mary Atkinson** assisting girls with the installation of water pumps and duck boxes at the lake.

1,287 girls participated in **18 Day Camps** throughout our council exploring the outdoors and experiencing program topics including recycling, theater, science, astronomy, citizenship and traditions.



AT THE SPEED OF A GIRL



March 12, 2012 marked the 100th anniversary of Girl Scouting. Over 95 events were held council-wide to help celebrate the long and rich history of the organization and the amazing accomplishments of Girl Scouts across our council and world-wide. The 100th anniversary *NC Museum of History Exhibit: At the Speed of a Girl* opened on November 18, 2011 and was a featured display through January 2013. Special memories were collected on note cards by Girl Scouts of all ages who visited the exhibit.

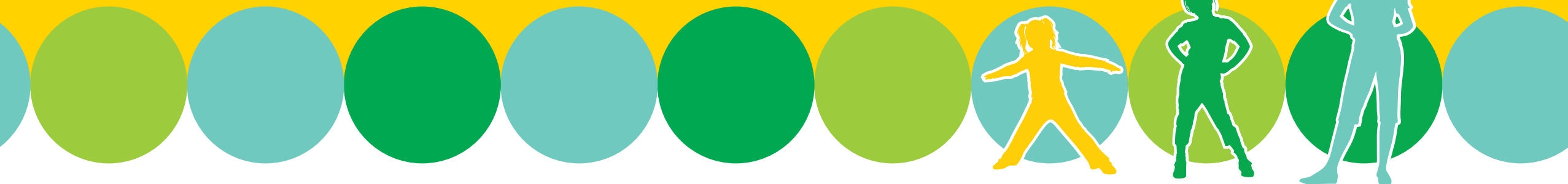
Over 90 Girl Scouts Seniors and Ambassadors and their adult pals traveled to New York City to tour the sights, visit the Girl Scout Headquarters, and see a Broadway show on the **Big Apple Bound** trip in honor of the 100th anniversary.

The **Adult Savannah Trip** offered our adult volunteers the opportunity to travel to Savannah, Georgia, and visit the birthplace

of Girl Scouting. Activities included a tour of the Juliette Low Birthplace, a trolley tour, dinner at Paula Dean's restaurant and shopping on cobble-stoned River Street.

A large-scale camping celebration was offered in April 2012 with more than 2,200 Girl Scouts and their adult chaperones attending the **Centennial Jubilee**. Highlights of the event included over 70 different activity tents, and a birthday celebration complete with cupcakes to mark our 100th year celebration.

Our Council took part in **Rock the Mall**, the 100th Anniversary Sing Along at the Nation's Capital in June. 286 girls and adults traveled by bus from three separate locations across the council on the road trip of a lifetime. Girls sang songs, met hundreds of thousands of sister Girl Scouts, and joined in a day of friendship and fun, all while touring the Nation's Capital!



Officers

Bernadette Spong, Chair

*Senior Vice President of Finance
Rex Healthcare*

Jean Gordon Carter, First Vice Chair

*Attorney and Partner
Hunton and Williams, LLP*

Joyce Mitchell, Second Vice Chair

*Director of Community Outreach
Office of U.S. Senator Kay Hagan*

Annette Moore, Third Vice Chair

*Staff Attorney
Orange County Government*

Harold Keen, Fourth Vice Chair

*President and CEO
KS Bank*

Kristi Pindell, Treasurer

*Director of Tax
MModal*

Michelle Lewis, Secretary

Community Volunteer

Lisa M. K. Jones

Chief Executive Officer

Members

Scottie Bryan

Community Volunteer

Cheryl Burns

*Family Intervention Services Specialist
Womack Army Medical Center*

Karen Dickinson

*Director of Compliance,
Audit and Problem Management
Blue Cross and Blue Shield of North Carolina*

Jenna Green

*Marketing Manager
Boddie-Noell Enterprises*

Bonnie Hancock

*Executive Director, Enterprise Risk
Management Initiative
N.C. State University*

Kristen Hess

*President
HH Architecture*

Darleen Johns

*Retired, Owner
Alphanumeric Systems, Inc.*

Deborah Johnson

*Sales Representative
North Carolina Education Lottery*

Manju Karkare

*Pathways to Change Leader
Duke University Medical Center*

Debra Laughery

*Vice President of Public Relations
WakeMed Health & Hospitals*

Autrice Long

*Community Development Manager
SunTrust Bank*

Damita McDougall

*Vice President Application Services
IBM Global Business Solutions*

Courtney Mumford

Community Volunteer

Fran O'Sullivan

*General Manager
Integrated Supply Chain, IBM*

Jim Peterson

*President
Research Solutions Consulting, LLC*

Valerie Quiett

*Attorney and Banker
Mechanics and Farmers Bank*

Melissa Reed

*Practice Administrator
Need Speech? Inc.*

Marywalker Romanus

*Owner
HighTech Accessory Items*

Sue Stevens

*Group Human Resources Manager
Kidde Aerospace and Defense*

Marie VanHeusen

*Family Readiness Group Coordinator
Fort Bragg Military Unit*

Frank Westmeyer

Retired

Girl Board Members

Moesha Allen

Megan Benedict

Carly Collette

Ami Patel

Kate Welker



Girl Scouts – North Carolina Coastal Pines, Inc. and Girl Scouts – North Carolina Coastal Pines Foundation, Inc.

CONDENSED COMBINED STATEMENT OF FINANCIAL POSITION

As of September 30, 2012

ASSETS

Current Assets

Cash and Cash Equivalents	\$ 5,783,095
Accounts Receivable	118,484
Pledges Receivable	316,455
Inventory	318,495
Prepaid Expenses	220,056

Total Current Assets 6,756,585

Net Property and Equipment 6,293,132

Other Assets

Investments	7,010,963
Long-Term Pledges Receivable	75,000
Assets Held for Sale	86,822

Total Other Assets 7,172,785

Total Assets \$20,222,502

LIABILITIES AND NET ASSETS

Liabilities

Accrued Payroll	\$171,240
Accounts Payable	613,928
Deferred Revenues	72,138
Accrued Leave	108,347
Custodial Accounts	40,950

Total Liabilities 1,006,603

Net Assets

Unrestricted	15,044,045
Temporarily Restricted	425,560
Permanently Restricted	3,746,294

Total Net Assets 19,215,899

**Total Liabilities
and Net Assets** \$20,222,502

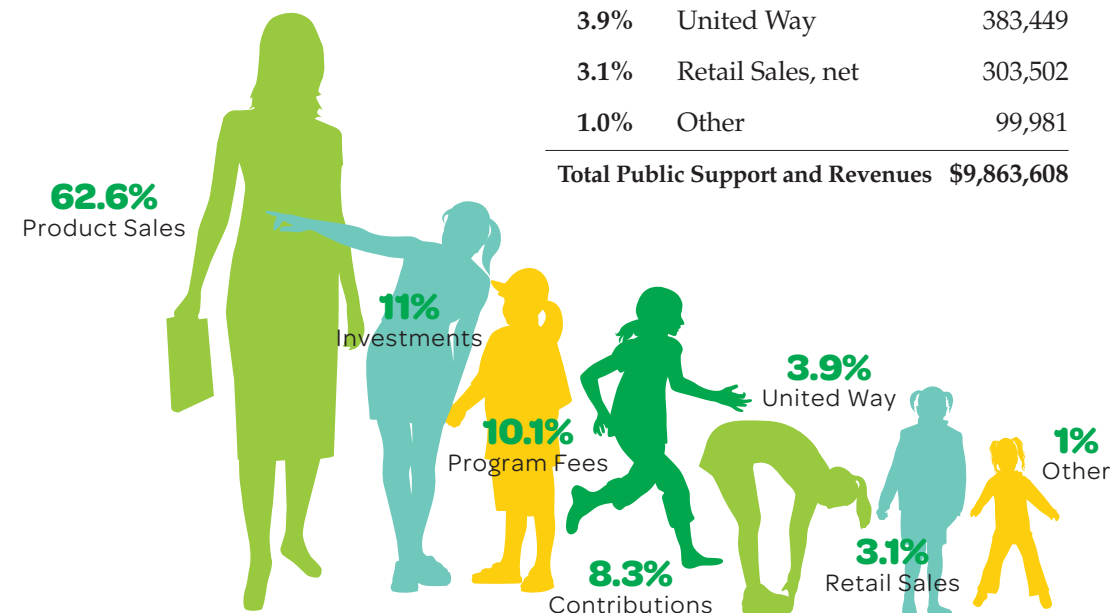
CONDENSED COMBINED STATEMENT OF ACTIVITIES

For the year ended September 30, 2012

Public Support and Revenues

62.6%	Product Sales, net	\$6,179,162
11.0%	Investments	1,082,489
10.1%	Program Fees	1,001,100
8.3%	Contributions	813,925
3.9%	United Way	383,449
3.1%	Retail Sales, net	303,502
1.0%	Other	99,981

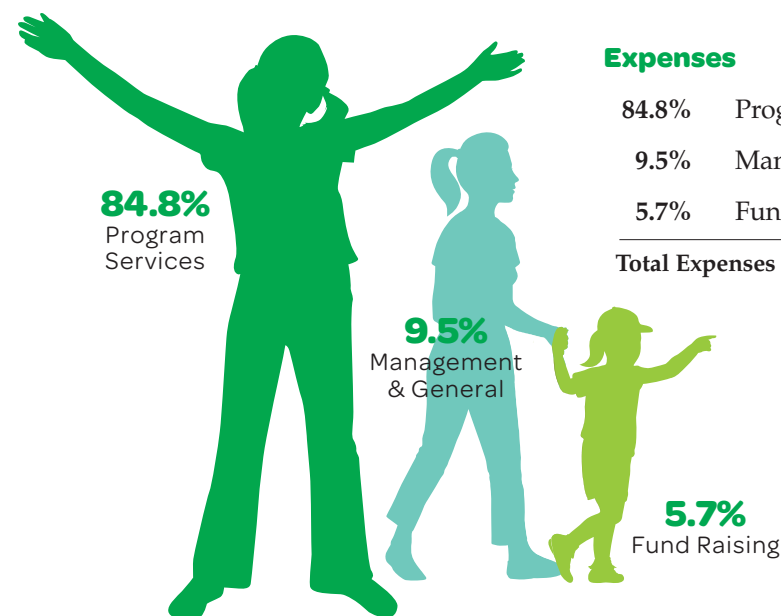
Total Public Support and Revenues \$9,863,608



Expenses

84.8%	Program Services	\$7,019,168
9.5%	Management & General	782,927
5.7%	Fund Raising	468,810

Total Expenses \$8,270,905



Investing in the Next Century of Leaders

Donors lead Girl Scouting forward in many ways. Giving expresses a donor’s personal belief in the value of Girl Scouting. Giving encourages greater engagement and inspires others to contribute. When we lead in giving, others follow.

Girl Scouts – North Carolina Coastal Pines is grateful for the generous financial support we receive from individuals, corporations and foundations. Contributions make an immediate difference in the lives of girls, with \$.89 of every contributed dollar going directly to programming for girls. Thank you for helping girls realize their leadership potential and become girls of courage, confidence, and character, who make the world a better place.

Donors who have made gifts for three consecutive years or more are [listed in green](#).

Named Funds

Carrie Burton Fund
Jane Barringer Fund
Marion Fisher Fund
Martha Webb Every Girl
Everywhere Fund
Misty Crabtree Eastham Endowment

Golden Eaglet Society

\$100k+
Kris Eastham
[United Way of the Greater Triangle](#)

Curved Bar Society

\$999,999- \$50k
[IBM](#)

First Class Society

\$49,999-\$20k
[Cisco Systems, Inc.](#)
[Fairway Outdoor Advertising](#)
[QSP](#)
[United Way of Cumberland County](#)
[United Way of Tar River Region](#)
[United Way of Wayne County](#)
[WKML](#)
[Women's Leadership Council of the United Way of the Greater Triangle](#)

Gold Circle

\$19,999-\$10k
Blue Cross and Blue Shield of North Carolina
[Girl Scouts of the USA](#)
Microsoft

[Time Warner Cable](#)
[United Way of Pitt County](#)
[United Way of Robeson County](#)
[United Way of Sampson County](#)

Silver Circle

\$9,999-\$5k
Baddour, Parker & Hine, PC
[BB&T](#)
[Bill and Emily Andrews](#)
[Carolina Hurricanes Kids 'n Community Foundation](#)
[Golden Corral Corporation](#)
[Junior League of Raleigh](#)
[Lenoir/Greene United Way](#)
[Rusine Mitchell Sinclair](#)
[National Inclusion Project](#)
[Diane and Sander Pomper](#)
[Roanoke Valley United Way](#)
[TechSoup](#)
[United Way of Chatham County](#)
[United Way of Coastal Carolina](#)
[United Way of Onslow County](#)
[United Way of Richmond County](#)
[WakeMed](#)
[Martha Webb](#)
[Wells Fargo](#)

Bronze Circle

\$4,999-\$2.5k
[Beaufort County United Way](#)
[Bill and Scottie Bryan](#)
[CenturyLink](#)
[Karen Dickinson](#)
[GlaxoSmithKline](#)
[Granville County United Way](#)
[Debra Z. Laughery](#)

Martin Marietta Materials, Inc.
Mt. Olive Pickle Company, Inc.
Network for Good
[Fran O'Sullivan](#)
[Pinehurst Resort](#)
[Replogle Family Foundation](#)
Smith, Anderson, Blount, Dorsett, Mitchell & Jernigan, LLP
[United Way of Bladen County](#)
[United Way of Franklin County](#)
[United Way of Vance County](#)
[United Way of Wilson County](#)

Promise Circle

\$2,499-\$1k
Boddie-Noell Enterprises, Inc.
[Deborah G. Brady](#)
Brand Connections
Brunswick Electric Membership Corporation
Cheryl Burns
Atrice Campbell-Long
Capital Broadcasting Company
Carolinas IT
[Jean Carter](#)
[CDB Corporation](#)
Columbus County Community Foundation
Craven County Community Foundation
[Sandy Fain](#)
First Citizens Bank
First Nonprofit Insurance Company
GE Aviation
Brenda Gibson
[Bonnie V. Hancock](#)
Harrell and Associates, LLC
[Bobby and Kathy Heath](#)

HH Architecture
[High Tech Accessory Items, Inc.](#)
[Laura Hulsey](#)
Hunton and Williams
Deirdre Jersey
[Darleen M. Johns](#)
Norma Jones
Manju Karkare
Kellogg, Brown & Root LLC
[James and Elaine Klapproth](#)
Ralph Lane
Lenovo
Little Brown and Company
Greg and Tammy Lyne
Sandra Maccioli
Martin County United Way
McLaurin Parking Co., Inc.
Moore County Community Foundation
Beth Moye
Courtney Mumford
Piedmont Service Group
[PNC Bank](#)
Poyner & Spruill, LLP
[Barbara Putney](#)
Valerie Quiett
[R.C. Sadler Foundation](#)
Melissa Reed
[Schneider Electric/ Square D Foundation](#)
Shag and Garnish
[Bernadette Spong](#)
Tracy Sternberg
[Cathy Stipe](#)
The Greater Greenville Community Foundation
The News and Observer
The Town of Red Oak
Theo Davis Printing
[United Way of Harnett County](#)
[United Way of Lee County](#)
[United Way of Scotland County](#)
US Foods
[Andrea J. Wenger](#)
[Francis E. Westmeyer](#)
Witherspoon Roses
[Rosemary and Smedes York](#)

Trefoil Club

\$999-\$500
American Heritage Painting and Decorating
Brrrberry Frozen Yogurt, Inc.
Lana Calloway
[Community Health Charities of North Carolina](#)
Lynn Conley

[Ellis and Bettsy Cowling](#)
[Allison Crandall-Armieri](#)
Emily Deese
Roberta DeLuca
Department of the Air Force
Diamonds Direct of Crabtree
[Leslie D. Flood](#)
Clyde and Ruth Fulk
Haley Gray
[Great Outdoor Provision Co.](#)
Kristen Hess
Travis Hockaday
[Hospira Foundation](#)
[Deborah Johnson](#)
Kevin and Amy Johnson
[Harold Keen](#)
[Cindy Kelley-Deaton](#)
[Rosemary Kenyon](#)
[Marsha Kitter](#)
[David and Michelle Lewis](#)
[Damita McDougall](#)
John and Isabelle McLean
Cynthia Merkin
NCSU College of Veternary Medicine
North Carolina Theatre
Nowell & Co.
Sheila Ogle
Angela Padgett
PCS Administration, Inc.
Sally Persico
[Person County United Way](#)
[James E. Peterson](#)
[Rex Healthcare](#)
[Rotary Club of Raleigh](#)
Sue Stevens
Samuel Stryker
Jeff Sullivan
[Sunrise Kiwanis Foundation](#)
Sun Trust Bank
Anthony and Betty Szatkowski
Tom and Barbara Tansey
Diana Taylor
The Worth Collection
Russ Tolar
Total Wine
[Walmart Foundation](#)
Claude Wilson
Wilson Rotary Club
Jay and Amy Young

Daisy Chain

\$499-\$150
Ace Hardware of Wake Forest
Stephanie Adams
Regina Alston
Dave and Caren Anders
Archie Chinnas

Catharine Arrowood
[David Bradford Auman](#)
Billie Jo Barbour
Bayer's Field Research Center
Heidi Behrends
Jennifer Berk
Bevello
Bottega Hair Studio
[Grace Brashear](#)
[John P. Braun](#)
Sam Brewer
Nancy Briggs
Leesa Brinkley
Cameron Clothing Company
Camp Ground United Methodist Church
Robin Campbell
Capital City Club
Carolina Railhawks
Carteret County Service Unit
Gena Chandler
[Paige Chandler](#)
Jamie Cook
Brandon Cordrey
Mary Cox
Sandra Crumrine
Mary Currin
Raymond and Kim Davis
[Ryan Davis](#)
Duke University Golf Club
Durham Lions Club
Mary Eberst
Sonya Edmonds
Suzan Elbel
Empire Eats
Jim and Peggy Fain
[Cindy B. Fink](#)
Linda Foreman
Four Oaks Bank & Trust
Laura Gasaway
Kristin Gibson
Girl Scout Troop #1119
Girl Scout Troop #1150
Girl Scout Troop #1796
Girl Scout Troop #1807
Girl Scout Troop #3203
Girl Scout Troop #3599
Girl Scout Troop #376
Girl Scout Troop #400
Girl Scout Troop #701
Girl Scout Troop #872
Glen Raven Custom Fabrics
Great Wolf Lodge
Jenna Green
Greene County Community Foundation
Suzanne Griffin
Susan Haberberger

Mark and Sylvia Hackett	Sara Scheck	Patricia and Robert Biggers	Samantha Digiovanni	Julie Hampton	Jeannette Lee	Ellen and Christine Parker	Lee Ann Storm
Pauline Haislip	Katherine Schikore	Biltmore Estate Wine Company	Mardi Ditenhafer	Lee Hansley	Linton Yee	Sharon Paye	Laurie Suson
Tina Hammer	Denise Seamster	Biltmore Estates	Rob and Caroline Doherty	Dana Hardman	Vickie S. Lewis	Marilyn Pearson	Linda Sutton
Harnett County Community Foundation	Seven Rivers Regulators	William and Elizabeth Blackwell	Charlene and Joseph Donnan	Grace Hardy	Liles Clothing Studio	Hazel Peck	Nada Sutton
Charlotte Harris	Julie Smith	Bluewater Grill	Vicki Downing-Watson	Lavoyce Harrell	Christine Lindquist	Megan Pennington	Mary Sweetter
Elaine M. Harrison	Pamela Smith	Helen Bowman	Aaron Driver	Darlene Harrings	Sarah Litty	Elaine Penny	Teresa Tarrant
Heritage Golf Club	Cynthia Snyder	Leigh Brantley	Angela Eberts	Edna Harris	Shirley Lombardi	Donald R. Perry	Dan and Carlissa Taylor
Ramona Holdstock	Lisa Strickland	Francine Briggs	Clyde Edgerton	Heather Hartzog	Long Branch Church	Kim Perry	Sandra Taylor
Sharon Honeycutt	Laura Sykora	Judy W. Brock	Sally Edwards	Havelock Service Unit	Becky Luce-Clark	Libby Perry	Dallas B. Thompson
Linda Hsiao	Teradata Cares	Brothers Cleaners	Maria Emer	Madonna Hayes	Larry Ludwick	Adrienne Perry	Kathleen Todd
Rae D. Hunter	The Carolina Ballet	Christine Burillo-Kirch	Elizabeth Engel	Terrica Hay	Cheryl Pfeiffer	Cheryl Pfeiffer	Debora L. Todd
Randall Jernigan	The Neuse Golf Club	Lillian Byrth	Kathie Evans	David and Norma Haywood	Mary Lundberg	Pfizer United Way Campaign	Yvette Tran
Johnson's Jewelers of Raleigh	The Redwoods Group Foundation, Inc.	Sonja Calabria	Heather Evans Smith	Michelle Hernandez	Skye MacLeod	Kristi Pindell	Truist
Jones County Community Foundation	The Shops of Baileywick	Susan Caldwell	Lon F. Everett	Gail Hicks-Smith	Madison at Cameron Village	Amie L. Pittman	Jan Turek
Jennifer King	Meta Trombley	Marcia Cameron	Exhibit Resources	Joyce Hill	Gina Malsch	Elizabeth Porter	Victoria Turner
Benjamin Knight	Tish Turner	Canvas On Demand	Jennifer Exum	Lois R. Hirschman	Matthew Markie	Linda Pridgen	Tyler House
KS Bank	Kathryn Twiddy	Melinda Carlson	Fab'rik	Cheryl Hiser	Lauren Marsalo	Susan Prytherch	Carolyn Ullman
Monica LaLiberte	Sandra R. Umstead	Carolina Ale House	Laurie Fasano	Historic Oakwood Cemetery	Massage Envy	Earl J. Quick	United Way of Central Carolinas, Inc.
Meredith Lassiter	United Way of Central and Northeastern Connecticut	Susan M. Carter	Julia Faulk	Tammy D. Hnatek	Nicole Matlach	Susan Quinn	United Way of the Quad Cities Area
Tammara Leonard	University of North Carolina Hospitals	Cary XYZ Senior Citizens Club	Ellen Fennell	Phyllis Hoffman	Amy McBennett	Raleigh Little Theatre	Josie Van Dyke
Carol Lomanto	Traci Valdez-Patton	Lea L. Chandler	Pamela Fiely	Catherine Holmes	Cynthia McBride	Rosa Rangel	Marie Van Heusen
Lonnie Poole Golf Course	Wake Gymnastics	Chapel Hill Restaurant Group	Elizabeth Frankenberg	Kimberly Holt	Xavier and Shirley McCall	Nicole Ray	Sheri Vaughan
Luxe Beauty Boutique	James Warren	Katy Chavez	Amanda Frazier	Nick Honeycutt	Sue A. McClain	Jean Rea	Kristin M. Vickery
Larry Mackell	Carrie Welton	Sandy W. Childrey	Glendora French	Pam Hopkins	Valerie and Dennis McDevitt	Linda Reece	Elizabeth Vigdor
Gail Mackey	Betsy Wharton	Lisa Christensen	Nicol Frewerd	Janice Horner	Elizabeth McIlwain	Charles P Reeves	Nancy Voiland
Marbles Kids Museum	Whole Foods Market	Catherine Clabby	Shelley Frye	Ellen Horner	Melissa McLean	Charles Reinhardt	Melanie Wade Goodwin
Eric and Jeanene Martin	Wildwood Green Golf Club	Sandra Clark	Galatea Boutique	Mary Lynn Howie	Melinda McNeely	Renee's Cakes	Wake Area 16
Ashley McCormack	Rebecca Wiles	Coastal Carolina Community College	Judy and Gary Gallahan	Jennifer Hruska	Deborah D. Menius	Frances K. Ries	Wake Area 23
Jane Ann McKillop	Sue A. Williams	Suzy Cocciolone	Shannon Gamber	Andrea Hukin	Ken and Marne Meredith	Susan Riley	Linda Walters
Frank McNally	ZipQuest	Rebecca Cole Mayo	Elvira Garcia	Angela Hunnicutt	Kimberly Miller	Ralph and Francine Roberson	Kelly Walton
Mile High United Way		Katherine Collins	Jennifer Garst	Mary Hunt	Lori V. Mills	Nancy Roby	Joseph Ward
Elaine Miller		Terri Cook	Lisa Gehrin	Tracy Hunt-Riggle	April Mills	Patricia Roderick	Margaret Webb
Nazaly Miller		Amy Corsmeier	Girl Scout Troop #1008	Vicki Huntwork	Kristi L. Milowic	Carolyn Rogers	Sasha and Nichelle Weintraub
Annette Moore	Friendship Ring	Bethany Cotter	Girl Scout Troop #1337	Valerie Jackson	Nancy Moody	Deborah Rosenbaum	Lee Anne Ryan
Kimberly A. Moore	\$149-\$35	Michele Counter	Girl Scout Troop #1451	Kerry Johnson	Marline Monroe	Lee Anne Ryan	Patricia Samuel
Debra Morgan	Rebecca Addis	Beverly Cowdrick	Girl Scout Troop #1510	Charlotte A. Jones-Roe	Alexandra Moody	Annemarie Sapko	Annemarie Sapko
Grazia Mostella	Ben and Laura Aiken	Carol C. Cox	Girl Scout Troop #1554	Serena Josephson	Debra B. Morek	Donna Scheck	Donna Scheck
Joyce Mitchell	Mark and Loretta Alston	Leslie Cross	Girl Scout Troop #1658	Karen Kelley	Sandra Moss	Barbara Grant Schliebe	Barbara Grant Schliebe
Nationwide Foundation	Karrie Andrews	Jill Cummings	Girl Scout Troop #17	Shirley Kelly	Jolan Motyka	Cecelia Schneider	Cecelia Schneider
New River Rotary Club	Sherry Anscher	Annie Cunningham	Girl Scout Troop #1815	Nicole White Kennedy	Moving Mantra Yoga Studio	Wanda A. Schramm	Wanda A. Schramm
Nofo at The Pig	Lanora Atkins	Claudia Curtis	Girl Scout Troop #3308	Hope Kennedy	L.A. Moyer	Jennifer Schulz	Jennifer Schulz
North Ridge Country Club	Deborah Baker	David L. Cusic	Girl Scout Troop #332	Doug Kenyon	Cammy S. Mullen	Melissa Sempowski	Melissa Sempowski
Tom O'Connor	Nell Ban	Courtney Dail	Girl Scout Troop #420	Keystone	Mary Muth	Kathryn Shengulette	Kathryn Shengulette
Elizabeth Olbrich	Deda Band	Leah Dail	Girl Scout Troop #46	Debora King	Nathan Nallainathan	Jennifer Shevach	Jennifer Shevach
Edward Paradise	Joan Banker	Heather Daniels-Blalock	Girl Scout Troop #673	Kristen Kirby	Andrea Narbut	Heather Sirgany	Heather Sirgany
Belinda Parent	Janice Baptiste	Davenport @ 5	Girl Scout Troop #937	Dawn Kloczkowski-Bertrand	Lori Neal	Andrea Sloan	Andrea Sloan
Marcie Parker	Laura Barnett	Deborah Davis	Girl Scout Troop #957	Tonya Koonce-Daniels	Connie Nelson	Angela Smith	Angela Smith
Tina Patterson	Valerie L. Bateman	Alison Davis	Ruth Glaser	Carol Koutsy	North Carolina Symphony	Steward Smith	Steward Smith
Phydeaux	BB&T	Erin Debenport	Erica Gordon	Tanya Kozlowski	Adrienne Northington	Smith-Bryan Chapter of Daughters of the American Revolution	Smith-Bryan Chapter of Daughters of the American Revolution
LeShawndra N. Price	Jen Bear	Laurel B. DeLuca	Jennifer Gray	Amanda Krieger	Rebekah Oliver	Cynthia M. Sortisio	Cynthia M. Sortisio
Linda Quarles	Louise D. Benner	Heather Denny	Ericka and Christopher Griffin	Katrina Kruhm	Sara Olson	Lisa Stallings	Lisa Stallings
Kristin Replogle	Tommy Benton	Courtney Diaz	Kelly T. Griffin	La Farm Bakery	Dora Owens	Denise Stearley	Denise Stearley
Marywalker Romanus	Bergen County United Way Charitable Flex Fund		Brook Gunter	Monica Lail	Julie Palmer	Claire Stoner	Claire Stoner
Thomas Rominger	Angela Betoncourt		Gool Gupta	Mary Beth Lassiter	Krista N. Park		
Lisa Rower			Jennifer Gwen Carter				
			John Hammond				

Elizabeth Wolgin
Elisa Wolper
Margaret Womble
Stephanie Woodard
Lisa Woodham
Michelle Wright
Beverly Wyckoff
Irma Yacono
Amy Yeager
Geraldine Young

Gifts In Kind
Ace Hardware of Wake Forest
Brand Connections
Fairway Outdoor Advertising
IBM
Ralph Lane
Greg and Tammy Lyne
Martin Marietta Materials, Inc.
Microsoft
Connie Nelson
QSP
TechSoup
WKML

In Honor of
Marjorie Johnson
Betsy Cowling

Nancy Caggia
Elaine Loyack

Caroline Eason
Elaine Nix

Girl Scout Troop #1008
Girl Scout Troop #1008

Long Branch Church
Girl Scout Troop #17

Nancy Jirtle
Helene Mochrie

Sandra Umstead
Hope Derby

Wake Area 23
Jim Hynus

Charlene and Joseph
Donnan
Karen Dickinson

David Cusic
Kimberly Cusic Roberts

Ruth Glaser
Leslie Flood

Kellie McLendon
Logan McLendon

Kim Williams
Paige Barnett

Michele Rivkin-Fish
Peggy Anglin

Serena Josephson
Quinn Shopbell

Emily Deese
Troop 144

Jeri Pederson
Wanda Schramm

In Memory of
Betty H. Wessell
Cathryn Creasman

Brian Umstead
Darlene Harrings
Deborah Rosenbaum

Charles L. Wilson, Jr.
Katherine Roberson
Dorothy Williford
Joseph Ward
Linda Pridgen

Charlotte McCleskey Jones
Charlotte Jones-Roe

JoAnn Shultz
Judy and Gary Gallahan

Lorraine Wilson
Claude Wilson

Louise Kelley Guindi
Cindy Kelley-Deaton

Misty Crabtree Eastham
Lea Chandler
Keystone
Seven Rivers Regulators

Alisa West
Jeannette Lee
Debra Morek

Mrs. Barbara Graham
Elaine McMichael

Patsy Bonsal
Sandra Umstead

Ruth Carter
Marion Deerhake

IBM Employee Donors

Scott Fast
Elvira Howell
Patricia Hudson
Samantha Knott
Keshav Kode
Matthew Markie
Fran O'Sullivan
Karey Phipps
Ian Shields
Brandon Smith
Mark Smith
Sharon Sweeney
Barbara Wetmore
Brian Zeyak



United Way and United Fund Donors

Thank you to the following United Ways and United Funds for their financial support: Beaufort County United Way, Granville County United Way, Hoke County United Fund, Lenoir/Greene United Way, Martin County United Way, Person County United Way, Roanoke Valley United Way, United Way of Bladen County, United Way of the Cape Fear Area, United Way of Central and Northeastern Connecticut, United Way of Chatham County, United Way of Coastal Carolina, United Way of Cumberland County, United Way of Franklin County, United Way of the Greater Triangle, United Way of Harnett County, United Way of Lee

County, United Way of Onslow County, United Way of Pitt County, United Way of the Quad Cities Area, United Way of Richmond County, United Way of Robeson County, United Way of Sampson County, United Way of Scotland County, United Way of Vance County, United Way of Wayne County, United Way of Wilson County, and United Way Tar River Region.

Special thanks to the following people who designated their United Way contributions to Girl Scouts – North Carolina Coastal Pines. Individual names were provided by each United Way. Please alert us or your United Way of any errors.

Lynne Adams
John and Jean Adams
Ellen Adelman
Darnell Allen
Jeryl Anderson
Marcia Babb
Robert Bardon
Elizabeth Bell
Velma Bethea
Terry Biehl
Carina Bitticks-Alston
William Blaylock
Carlos Bonilla
Neal Bowes
Casey Branham
Patricia Brauer
Amanda Brazelton
Kimberly Breivogel
Bonnie Brown
Jim Brown
Kim Brown
Marshall Brown
William Brown
Andrew Browning
Carol Burton
Autrice Campbell-Long
Leigh Casavant
Jessica Causey
James Challis
Theresa Chamblee
David Chappell
Carol Clark

United Way and United Fund Donors

Patricia Clemens
Frank Clifton
William Cogdill
Rita Coggins
Chantal Cooke
Clyda Coor
DeLois Cue
Christy Daniels
Heather Daniels-Blalock
Caroline Daughtry
Frank Demercurio
Hugh Devine
Mary Dickerson
Christina Dietrich
John Dopler
Ricky Dozier
Christina Drew
Shenetta Dudley
Karen Duncan
Leigh Duque
Natasha Ellis
Axel Erles
Kay Everage
Dale Everett
Tracy Farrar
Scott Fast
Pamela Ferrell
Amanda Foster
Shante Gilliam
Pamela Gillis
John Gizdic
Lari Glenn
Sridhar Godthi
Jill Goodwin
Pauline Graham
Jared Grummert
Gayenell Gull
Christopher Gunter
Christina Hager
Annie Hamilton
Koni Hanish
Natasha Harris
Joyce Hatch
Richard Havill
Caren Helms
Jeanette Hendricks
Kevin Higgins

Mary Hildebrand
Belinda Hiltbruner
Kelly Hines
Mary Hinsberg
Jo Marie Holtshouser
Elvira Howell
Patricia Hudson
Daniel Hujar
Christina Hull
Laura Ingle
Amy James
Lark James
Antoinette Johnson
Charles Johnson
Bertha Johnson
Frances Jones
Bryant Jublou
Lauren Kearns
Cindy Kelley
Marcelle Nicole Kennedy
Joyce Kern
James and Elaine Klapproth
Cheryl Klein
Jane Knabe
Samantha Knott
Keshav Kode
Colleen Kosinski
Carole Koutsky
Leslie Kreizman
Nancy Kueffer
Monica Lail
Cindy Laird
Susan Lander
Christopher Larson
Deborah Lauria
Bobby Leach
Jason Leaming
Casandra Lee
Olivia Lee
John Leggett
Catherine Leonard
John Leshinski
Charlie Lewis
Deborah Linkowski
Carol Lomanto
Paula Lowe
Margaret Machamer

Josee Macintyre
Vashorn Mack
Matthew Markie
Kathy Martin
Larry Matthews
James H. Maynard
Katrina McCabe
Angela McClendon
Julie McLaurin
Jane McNeill
Chantrees McNeill
Cynthia McNeill
Johnny McQuaig
Angela Miles
Tara Mistretta
Bernadette Monk
Annette Moore
Marjorie Moore
Jennifer Morrison
Bonnie Nelson
Fran O'Sullivan
Erin Oliver
Toni Paulino
Sharon Paye
Renee Pelletier
Joann Petry
Karey Phipps
Kristi Pindell
Tisha Powell-Wayne
Valerie Quiettt
Audrey Randolph
Jennifer Riddick
Lisa Rimmer
John Roberson
Linda Robinson
Moronia Roe-Buckman
Teresa Roop
Kimberly Sanders
Edgar Sawyer
Kimberly Scarborough
Susan Schneider
David Seidel
Ian Shields
Deirdre Shore
Gregory Silloway
Robin Simonton
Pamela Smith

Brandon Smith
Mark Smith
Rebecca Smith
Darrylin Smith
Carol Sorochinski
Torie South
Diane Stone
Richard Strickland
Susan Sumner
Jennifer Swartz
Sharon Sweeney
Laura Sykora
Jacqueline Thompson
David Thurber
Dianna Toler
William Toler
Latricia Townsend
Latoia Valentine
Valerie Vann
Neva Vaughan
Jospeh Veilleux
Tiffany Viator
Nancy Voiland
Rhonda Waldron
Anita Wallace
Victoria Washington
Adam Waters
Rhonda Welfare
Andrea Wenger
Barbara Wetmore
Karine White-Braunger
Amy Wiley
Avis Wiley-Bell
Tillie and Ron Wilkins
Delroy Williams
Nicole Williams
Yulanda Wilson
Justin Winstead
Raymond Woodard
Patsy Woolard
Katherine Worley
Cary Wright
Gregory Yavelak
Cathy York
Melanie Younce
Brian Zeyak

We express our gratitude to our many friends who, through their generosity, are building girls of courage, confidence, and character, who make the world a better place. The preceding lists contain the names of donors who made gifts to Girl Scouts – North Carolina Coastal Pines from October 1, 2011, through September 30, 2012. The lists do not include pledges or deferred gifts. Although these lists have been prepared with care, we realize omissions or errors may have occurred and offer our sincere apologies. Please advise the Development Department of any corrections so that we can update our records.



**WHEN GIRLS LEAD IN THE WORLD,
THEY TAKE ACTION TO CHANGE
THE WORLD FOR THE BETTER.**


girl scouts
north carolina
coastal pines